

Passport SWISSTELEX IP Telex

Bringing telex into the modern communications landscape.

Telex still performs a vital role in business transactions. Its assured delivery and legal status makes it the preferred channel for a number of critical communications. But too often it is regarded by the IT function as the responsibility of telecoms, isolating it from mainstream communications.

With Lane Passport 4000, you can bring telex into your organisation's IP structure, enabling it to play a full role in your communications landscape. The Passport 4000 SWISSTELEX IP Telex interface offers a secure, real-time send-and-receive telex service using TCP/IP. As a result, it eliminates antiquated and increasingly expensive fixed-line circuits, creating an integrated communications solution.

Features include:

- Real-time telex transmission to the Public Telex Network.
- Secure connection using SSL and 128bit encryption.
- Simultaneous send and receive on the same number.
- Supports up to 512 IP telex ports.

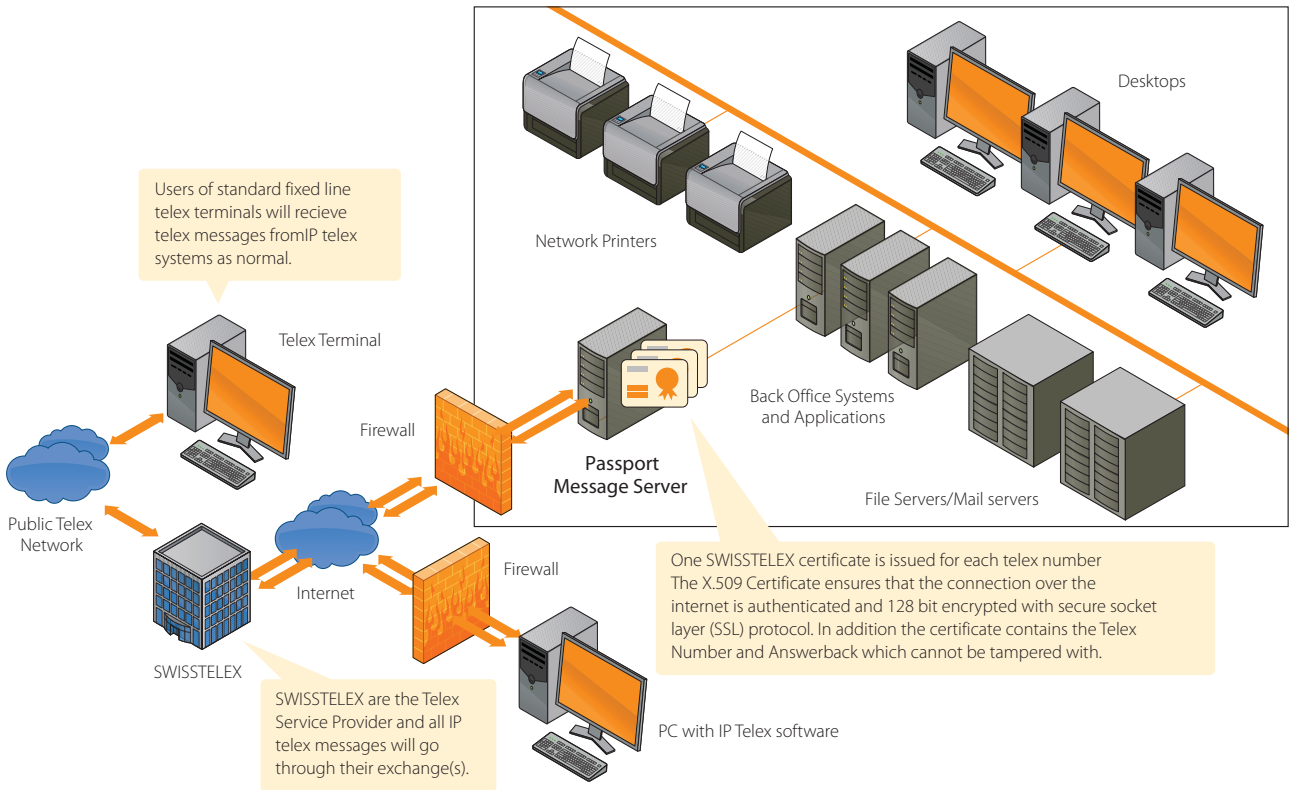
With the Passport SWISSTELEX IP Telex interface, you can:

- Retain existing telex numbers where PTT agreements are in place.
- Reduce line costs.
- Reduce equipment costs.
- Eliminate dedicated receive only and transmit only lines.
- Operate across different geographical areas.
- Integrate telex with your existing desktop systems and back office systems.

SWISSTELEX provides an X.509 digital certificate for each of your subscriber telex numbers. This contains your telex number and answerback, ensuring communications are secure and authenticated.

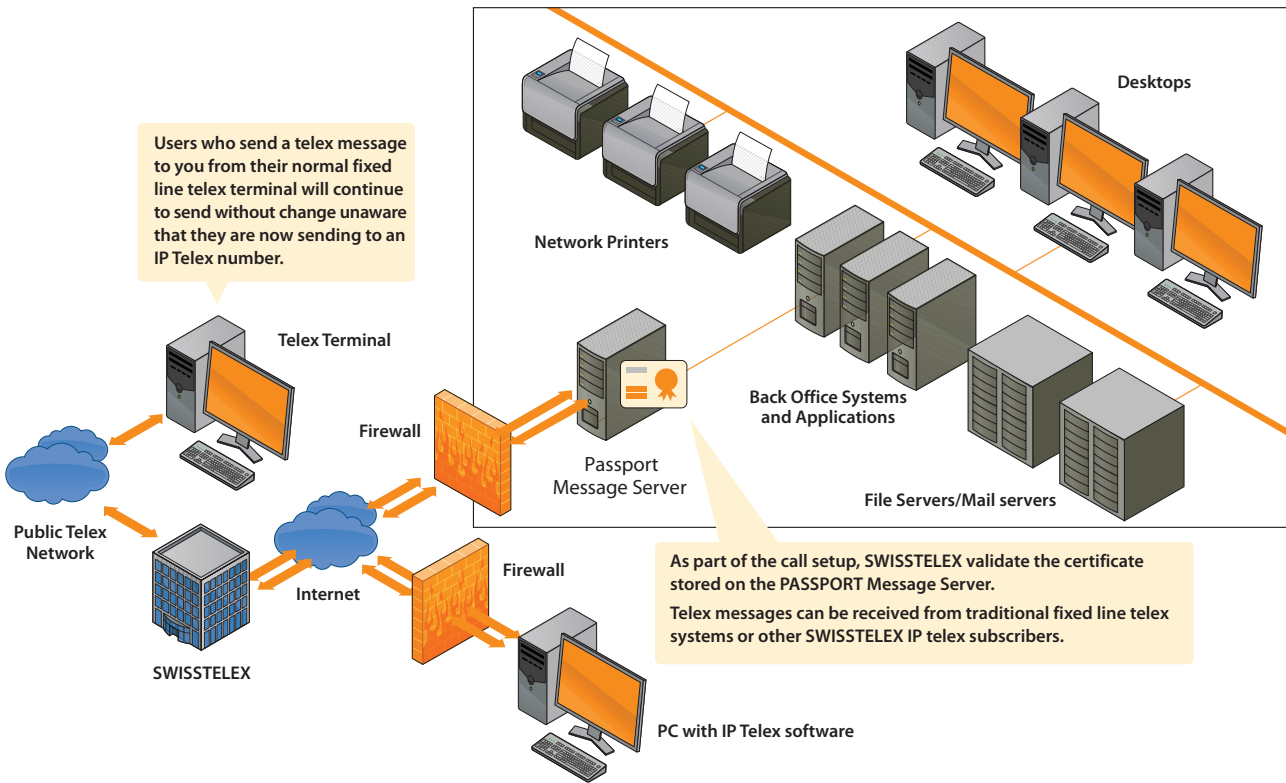


SENDING TELEX



- Passport 4000 can be configured with multiple IP Telex ports, each one with a SWISSTELEX certificate.
- Ports can be clustered into hunt groups, and each group can be associated with a specific certificate. This enables a particular answerback to be sent from each port when transmitting messages.
- Passport 4000 initiates a call by connecting to a fixed IP address at SWISSTELEX. Once certificate details are validated, the call is placed in the normal way.

RECEIVING TELEX



- Telex messages sent to each specific number will come in to the Passport 4000 server on the designated port, which is able to support multiple simultaneous connections.
- All transmitted and received telex messages are archived and a full audit trail is maintained.



North and South America
LANE Telecommunications, Inc.
Tel: +1 973 526 2979
Fax: +1 973 526 2988

United Kingdom and Europe
LANE Telecommunications Ltd.
Tel: +44 (0) 1256 301550
Fax: +44 (0) 1256 301555

Singapore and Asia
LANE Telecommunications, PTE.
Tel: +65 6353 0555
Fax: +65 6353 7448