

PASSPORT® 4000 MESSAGE HANDLING SYSTEM

Interface Manager Guide

V 1.0





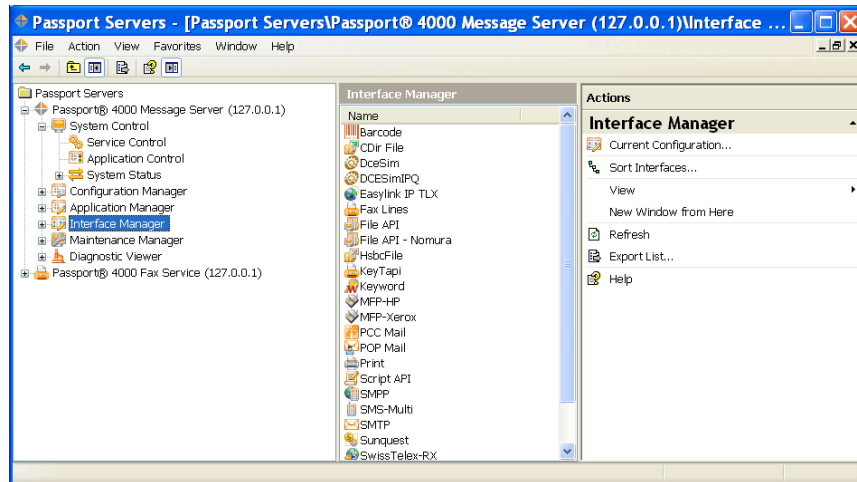
Table of Contents

PASSPORT Interface Manager	1
INTRODUCTION	1
CURRENT CONFIGURATION	2
SORT INTERFACES.....	2

PASSPORT Interface Manager

Introduction

Interface Manager provides the system administrator with a simple and unified method of configuring all communications interfaces on the PASSPORT 4000. The interface Manager is part of the PASSPORT 4000 snap-in group and operates within Microsoft Management Consul.



Use the Interface Manager snap-in extensions for configuring and maintaining the communication lines.

Depending upon license options purchased, the Interface Manager may include extensions such as...

- Fax Lines lines used by the Fax Service
- SMTP Mail server email interface
- POP Mail client mail interface
- PCCMail used by the PCC client program

Operations



Current Configuration

Clicking **Current Configuration** in the Action Pane will open a dialog and display the current licensed count and configured count for each interface..



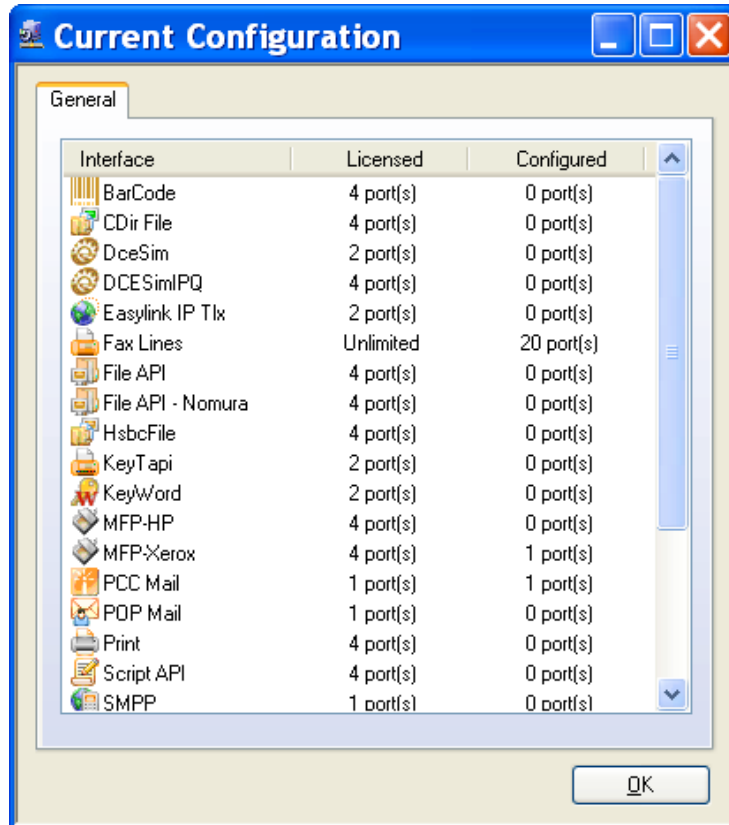
Sort Interfaces

Clicking **Sort Interfaces** in the Action Pane will sort the communication line interfaces in ascending order, first by driver name, then for each driver, by port name. If the Passport 4000 service is running, changes should be picked up in about one minute.

For more details, see the help file for the specific snap-in.



Current Configuration



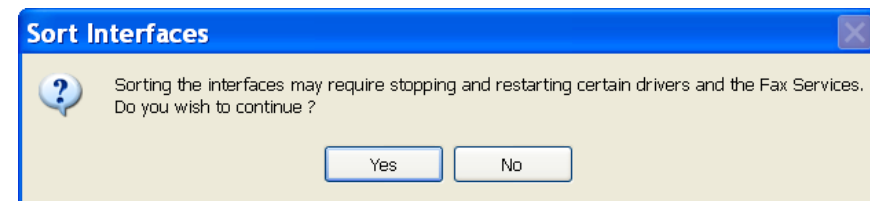
Interface	Licensed	Configured
BarCode	4 port(s)	0 port(s)
CDir File	4 port(s)	0 port(s)
DceSim	2 port(s)	0 port(s)
DCE SimIPQ	4 port(s)	0 port(s)
Easylink IP Tlx	2 port(s)	0 port(s)
Fax Lines	Unlimited	20 port(s)
File API	4 port(s)	0 port(s)
File API - Nomura	4 port(s)	0 port(s)
HsbcFile	4 port(s)	0 port(s)
KeyTapi	2 port(s)	0 port(s)
KeyWord	2 port(s)	0 port(s)
MFP-HP	4 port(s)	0 port(s)
MFP-Xerox	4 port(s)	1 port(s)
PCC Mail	1 port(s)	1 port(s)
POP Mail	1 port(s)	0 port(s)
Print	4 port(s)	0 port(s)
Script API	4 port(s)	0 port(s)
SMPP	1 port(s)	0 port(s)

Current configuration provides a snapshot view of the types and number of ports currently configured within your PASSPORT 4000 system

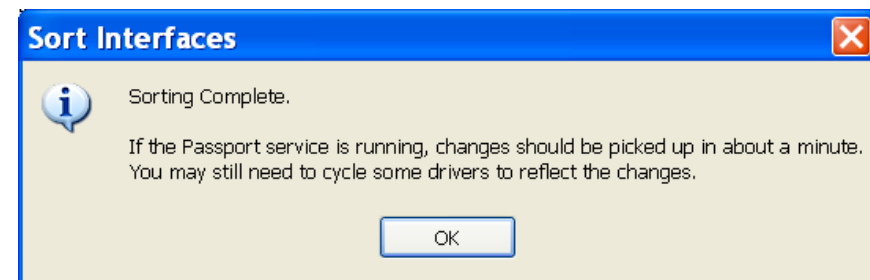


Sort Interfaces

If you select this option to sort the communication line interfaces in ascending order, first by driver name, then for each driver, by port name you will receive the following warning:



Selecting yes an information note will be provided to let you know when to expect the change. This will take about 1 minute.



North and South America
 LANE Telecommunications, Inc.
 Tel: +1 973 526 2979
 Fax: +1 973 526 2988

United Kingdom and Europe
 LANE Telecommunications Ltd.
 Tel: +44 (0) 1256 301550
 Fax: +44 (0) 1256 301555

Singapore and Asia
 LANE Telecommunications, PTE.
 Tel: +65 6353 0555
 Fax: +65 6353 7448